

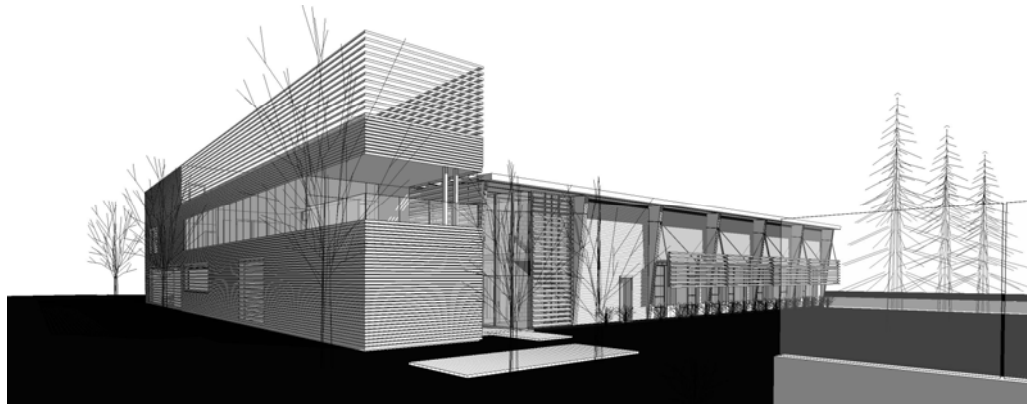


VANCOUVER LEED USERS GROUP

VLUG Event

Friday March 28th @ noon
Georgia Room @ the Terasen Gas Building
1111 Georgia Street

Topic: "City Light: An adaptive reuse project."



The design transforms an existing warehouse into a new, state-of-the-art ambulatory care facility. Located in Port Angeles, WA, on the waterfront, the project utilizes the on-shore winds to drive a natural ventilation system. The project is targeting LEED Gold, and will be the first LEED certified building in Port Angeles. The project creates a bold new vision for downtown out of a variety of design issues archaeology, municipal negotiations, "new-model" healthcare delivery, and geotechnical challenges. The project was developed with Revit (BIM). Construction start: June 1, 2008.

Jesse Garlick, M.Arch, LEED A.P., is an intern architect at Stantec Architecture, and has worked on a variety of educational, health-care, and mixed-use residential projects throughout B.C. including Charles Dickens Elementary School (project designer/architect), the Vancouver School Board's first LEED project, the FMPA Ambulatory Care Center (project architect) and multiple rezonings for mixed-use developments in Squamish B.C.

Lunch will be provided. Cost for attendance:

\$10 in advance / \$20 at door Cascadia members, EGB, students

\$15 in advance / \$25 at door CaGBC or USGBC members

\$25 in advance / \$35 at door Non-members

A CHAPTER
OF THE

