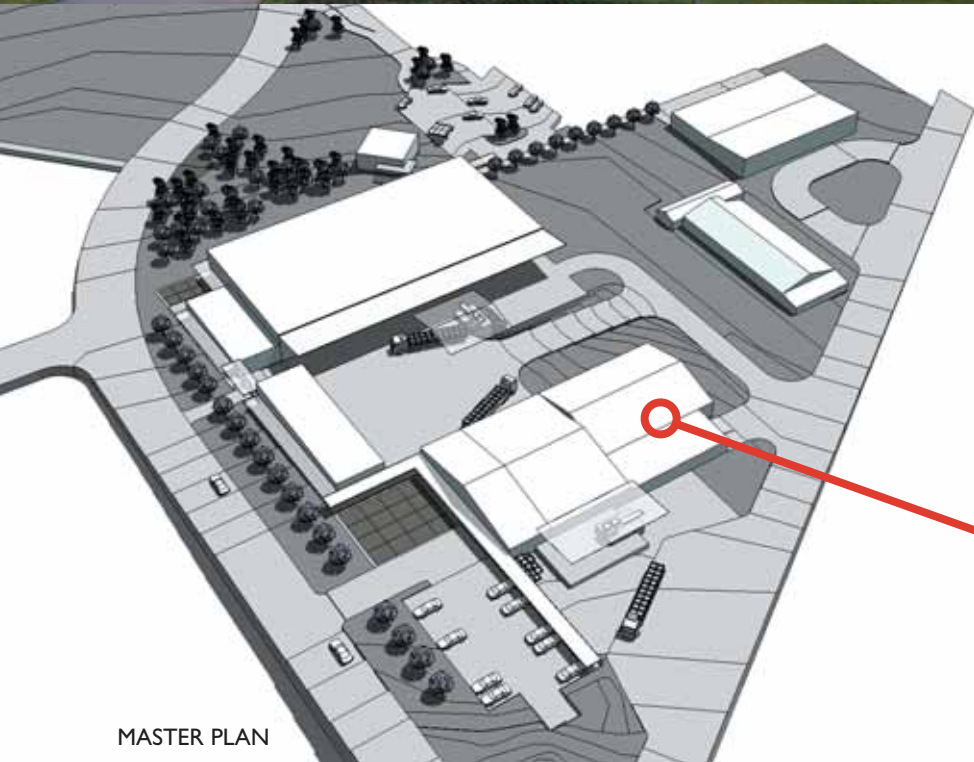
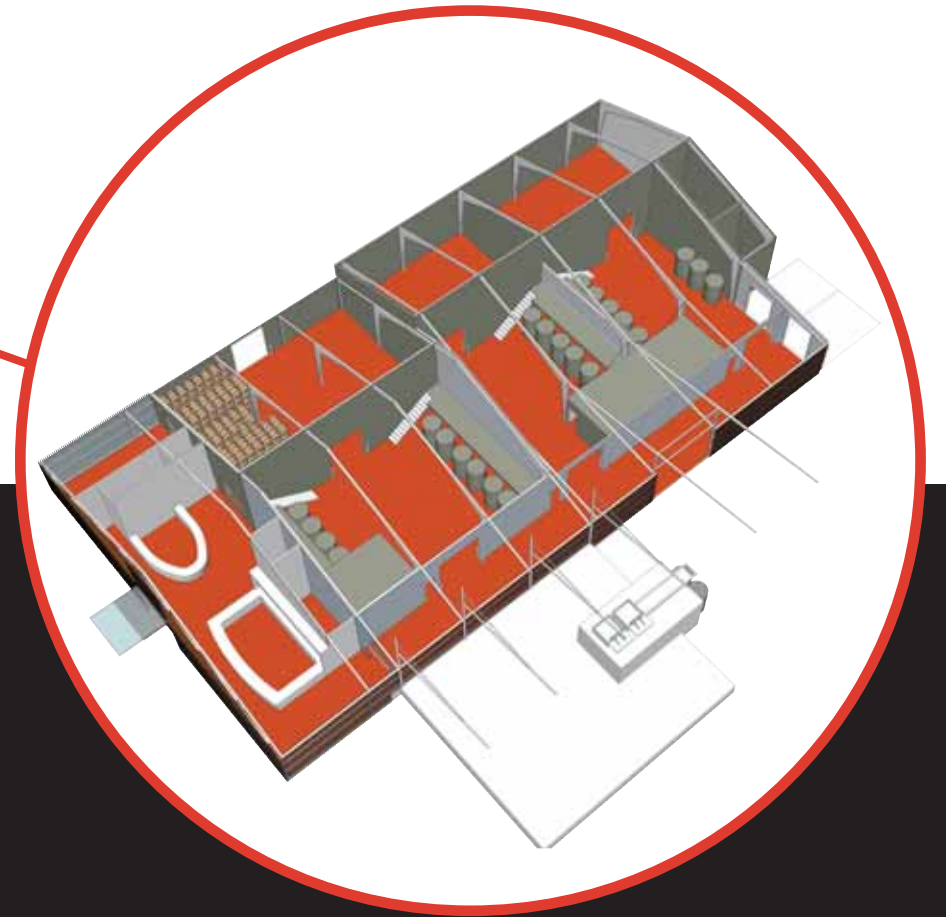


# DUNDEE WINERY CONDOMINIUMS



The owners of a bag recycling company want to convert their 30 year old pre-engineered steel building into a winery condominium capable of producing up to 17,000 cases per year from three small wineries all located under one roof.



## SUSTAINABLE INITIATIVES

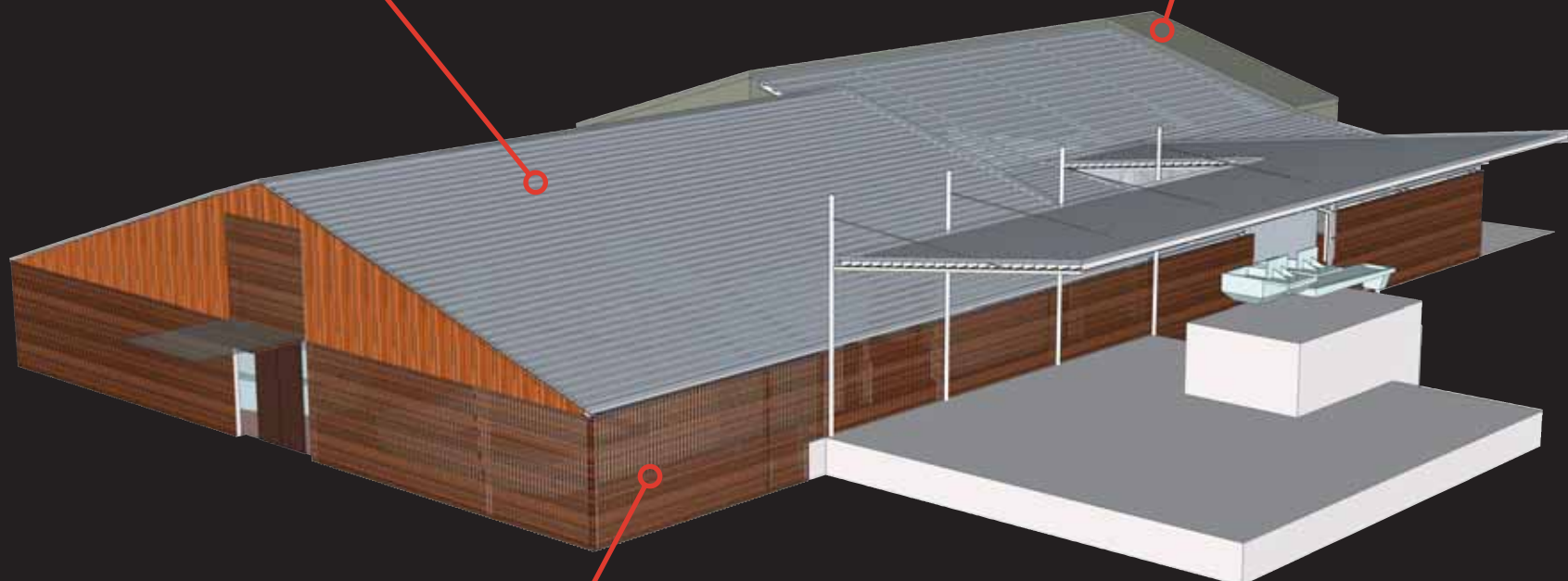
The principal sustainable initiatives are centered around the adaptive reuse of an existing building. The co-location of three wineries, water recycling, maximized daylighting, and energy reduction for heating and cooling. The co-location initiative effectively reduces the need to build three individual wineries thereby reducing the amount of materials and energy used. A shared tasting room and office space, as well as a common crush pad and equipment decreases the square footage needed by each winery.

### KALWALL TRANSLUCENT PANELS

Enables winemakers to work throughout the day without artificial lighting.

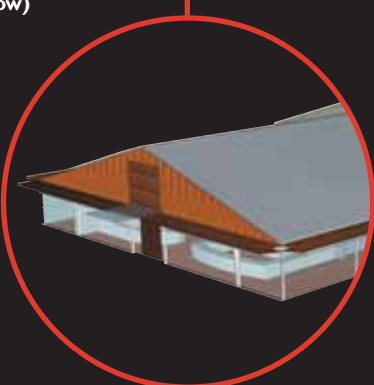
### MINERIT SANDWICH PANELS W/ BASF BASED EPS INSULATION

Allows barrel rooms to remain at a constant temperature without excessive heating and cooling.



### FSC CERTIFIED WOOD SLAT WALL

Creates filtered light and natural ventilation in the circulation spaces. In the more public areas they are designed to fold-up into awnings to increase solar protection and improve visibility of the interior. (Pictured below)



Existing slab, superstructure, girt and purlin system will be cleaned and re-used. Exterior will be re-skinned using three primary materials to emphasize the difference between programmatic areas.